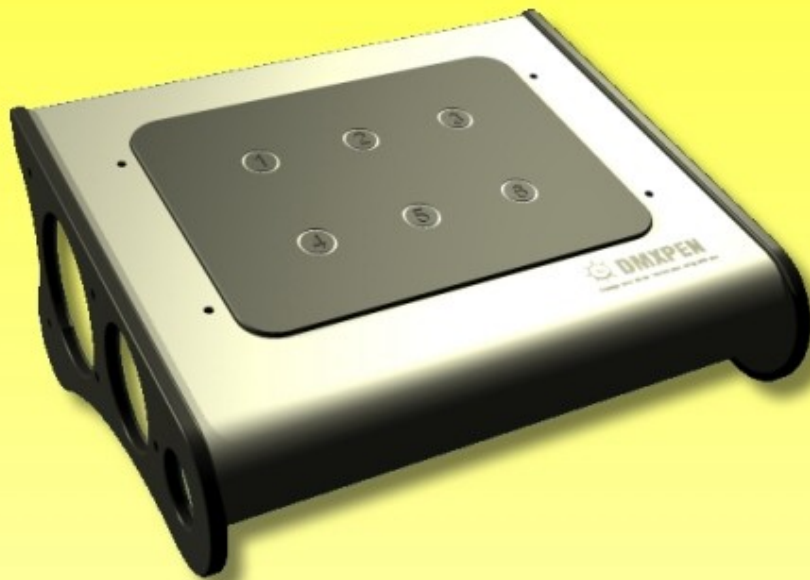




# DMXPEN *tablet*

Design your show, record and bring with you



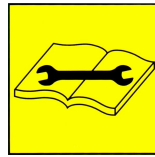
cat.no. dmmpenTabletR1-UK-2010

**Manual / UK**

## INDEX

Introduction .....	page	3
Warnings .....	page	4
SetUp / Connections .....	page	5
Technical Specification .....	page	6
Description .....	page	7
Touch Panel controlled DMX recording mode .....	page	8
Touch Panel controlled playback mode .....	page	9
MIDI controlled playback mode .....	page	9
PenSuite controlled playback mode .....	page	10
Warranty .....	page	14
Maintenance / Cleaning .....	page	14

## INTRODUCTION



Thanks to buy this DMXPEN series products.  
A correct use of this product, will ensure a correct functionality, a long life and at the same time will avoid product failure.

Please read this manual carefully and be sure to understand the information provide to ensure a safe and reliable application, to learn a suitable knowledge of the product and his necessary precaution before using it.

## WARNINGS

1. This manual describes the DMXPEN Tablet operating functions. The user must operate the product according to the performance specifications described in the operation manuals.
2. While every effort has been made to ensure that the information on this manual is accurate and complete, we would appreciate any errors or omissions submitted to our attention.
3. Maintenance, inspection, and replacement of parts must be performed only by authorized personnel.
4. We reserve the right to change the specifications of the hardware and software described in this manuals at any time and without prior notice.
5. Do not use DMXPEN Tablet with wet finger and do not place water on the touch panel.
6. After the package opening, please make this check:
  - The received product correspond with the ordered one.
  - No part are missing on the received product.
  - The product is not damaged.
  - Contact immediately a DMXPen distributor in case of fault.

## SET UP/CONNECTION

DMXPEN Tablet was developed for a desk use and the Black opaque PVC wings allow to move the device on the desk surface avoiding any scratch.

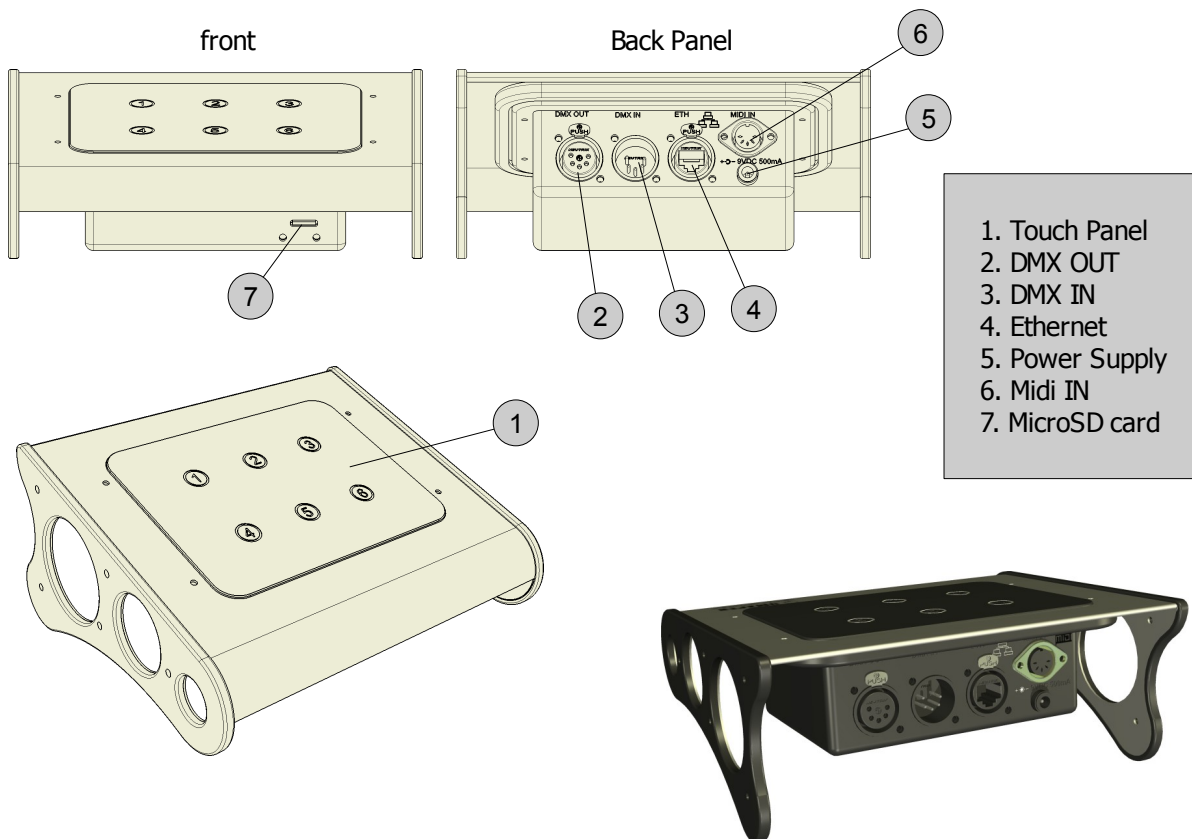
To start up the product, be sure that the microSD card is inserted (as provided from the factory) and power on it with the provided power supply.

Note: DMXPen Tablet do not has a main ON/OFF switch and we recommend to unplug the power supply for maintenance.

Now the product is ready to plug on DMX line or ethernet network for show recording and playback.

## Technical Specification

Dimension ( L x W x H )	200 x 160 x 88 mm
Weight	700 gr.
Material / Finishing	Glazed Inox steel
	One Optocoupled bidirectional DMX Line
	One DMX universe recording / playback
	One ArtNet universe recording / playback
	Convert ArtNet to DMX / DMX to ArtNet
	One General MIDI Input port
	Loop functionality
	2GB microSD card
Degree protection	IP 30
	Operating Relative Humidity : from 30% to 85% without condensation
Operating Temperature	-5°C + 50°C
DMX IN Connector	5 pole XLR Neutrik male
DMX OUT Connector	5 pole XLR Neutrik female
Ethernet Connector	RJ45 Neutrik
Power Supply	12-24VDC – 500 mA
Power Consumption	200 mA @ 12 VDC



## DESCRIPTION

DMXPen Touch is a desktop device with the following features:

- DMX512 Signal Recording and Playback
- ArtNet Signal Recording and Playback
- ArtNet → DMX Conversion
- DMX → ArtNet Conversion
- Recording and Playback remote control through ethernet port
- Playback remote control through MIDI port
- Recording and Playback control through touch panel user interface

Briefly the DMXPen products mission is record and carry easily: "*Design your show, record and bring with you*".

*Why recording?* The first goal of a professional light programmer is to select a light desk and learn to use it in the best way, because this means freedom of expression and productivity.

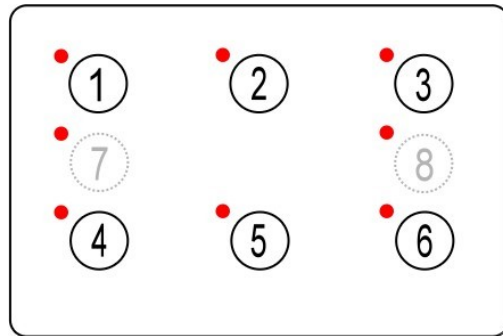
The DMXPen products range improve this concept taking care of recording what the light programmer realize whit his preferred equipment.

*Why carry?* Often the light programmer presence is not necessary during the show playback, so he can realize the show and record it so the user has only the duty to activate his playback (i.e. fair booth, shop, club, etc.)

Moreover doing this with a normal light desk, mean carry heavy or expensive equipment that usually are not so familiar to the users (i.e. barman, custodian, etc.).

This is another issue improved from the DMXPen products because contains only the show engine with a simple user interface at a very low cost.

## Touch panel controlled DMX recording mode



① ⑥ for each touch key 2 SHOW can be controlled

⑦ ⑧ the 7 and 8 hidden touch key, are programming key

⑦ pressing for at least 3 second the hidden touch key 7, the system go on show 1-2-3-4-5-6 recording mode:



the 1-2-3-4-5-6-7 leds blinks at slow rate in case of DMX signal not present and blinks at fast rate in case of DMX signal present.

Going in recording mode, the DMX Port is switched to Input (DMXPEN tablet has only one DMX line shared for Input and Output and the 5 pole male and female XLR connector are wired in parallel).

Now is possible to connect the light desk and select one of the 6 touch key associated to the primary recording session. A 10 second time out allow to exit from recording mode in case of non selection. During recording session, the led near to the associated touch key and the key 7 will blink.

Then start the show playback from the light desk. The selected touch key and key 7 will blink fast upon DMX receiving. Finally pressing any touch key ends the recording session.

During the recording session a DMX signal absence for more that 10 second, cause a recording stop operation.

⑧ pressing for at least 3 second the hidden touch key 8, the system go on show 11-12-13-14-15-16 recording mode with the same 1-6 show behaviour.



The recording session are stored on the microSD card on 2 files per key:

① for key 1 the show file name are 1.bin and 11.bin

② for key 2 the show file name are 2.bin and 12.bin

③ for key 3 the show file name are 3.bin and 13.bin

etc....

in case of show file already present and DMX line present during recording session, the show file will be overwritten.

## Touch panel controlled playback mode

Note: we suggest to not hold in your hand the DMXPen tablet during recording or operation playback to avoid unintentional key press. Leave the product on the desk surface and touch the key with one finger.

On standby all led will be switched off.

Pressing the first time key 1-6, show 1.bin-6.bin (if present) will be playback on both DMX and ArtNet line and the associated led will blink 2 times in a short time with a long off time.

In case of show not present, the led associated to the relative key will blink slowly 2 timers and after 2 second the device back to standby state.

During playback, the show runs an automatically loop mode.

Pressing the second time key 1-6, show 11.bin-16.bin (if present) will be playback on both DMX and ArtNet line and the associated led will blink 1 times with a long off time.

Each time the key number will be changed, the show selection restart from show 1-6 in the first pression and 11-16 in the second pression.

## MIDI Remote control playback mode

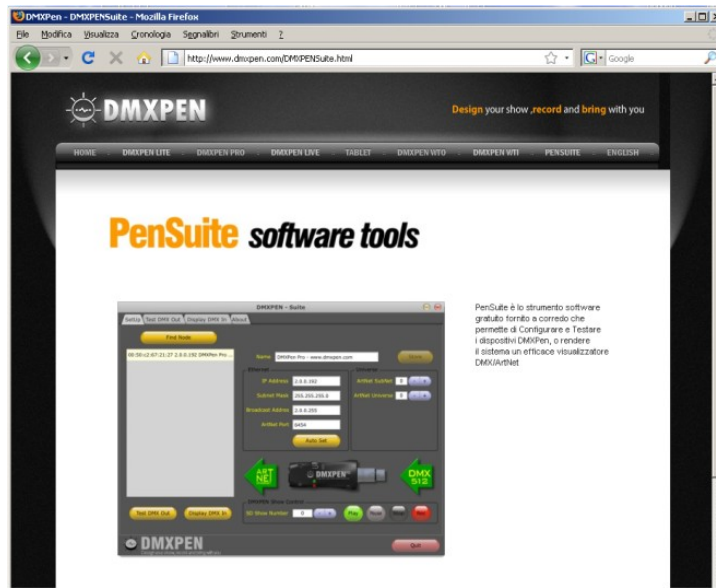
The MicroSD card recorded session can be playback also through the MIDI port using a normal MIDI device as a guitar MIDI foot switch, MIDI keyboard, or other MIDI device.

The DMXPen products are arranged to receive *Program Change* MIDI command, used in most case from MIDI device to recall a preset.

A preset 1 recall will start show playback 1, preset 2 recall will start show playback 2, and so on.

## PenSuite Remote control mode

DMXPEN products can be remote controlled through the free PenSuite software available on the device micorSD card or on [www.dmxpen.com](http://www.dmxpen.com) web site in both PC and MAC OS version.



The communication between the computer and the device is possible through the ethernet port, in two different way: direct connection (using a cross cable) or through Hub/Switch connection (using a Patch cable)



*Figure 1: Cross cable direct connection*



*Figure 2: Patch cable HUB/Switch connection*

Then launch PenSuite software; remember that a firewall systems can cause an incorrect

operation.



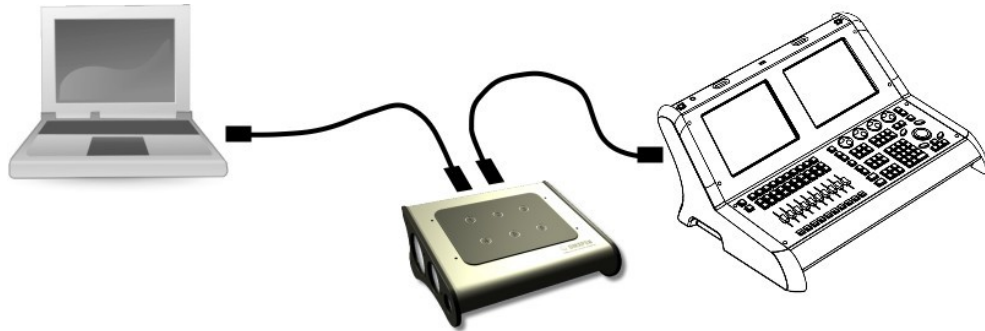
The "DMXPEN Show Control" section provide the DMXPen Tablet remote control:

1. Plug the DMXPen Tablet power supply with the microSD card inserted;
2. Connect DMXPen Tablet to PC network;
3. Press "find node" button to scan all the device connected to the network;
4. Select from the list the device that you want to control;
5. Press to DMXPEN image to select the correct data direction;



## ■ REC

6. Connect DMXPEN Tablet DMX In port to the light desk DMX Out port using DMX cable;

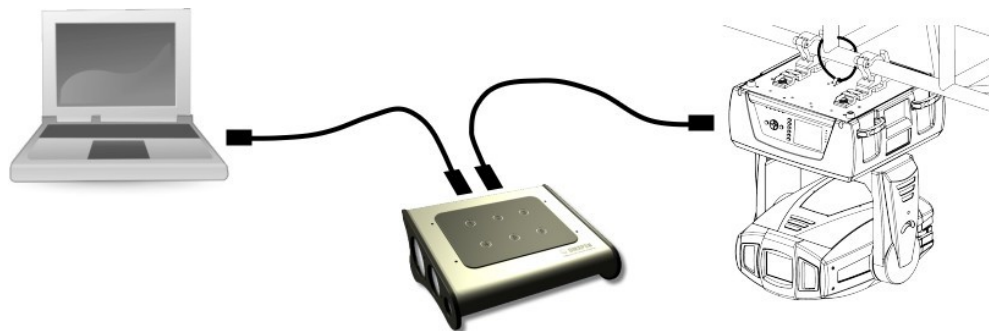


7. Select a show number for the recording session to store on microSD card;
8. Press REC button from "DMXPEN Show Control" panel on PenSuite;
9. Press STOP button to end the recording session;

In case of show already present, the recording session will be overwritten.

## ▶ PLAY

10. Connect DMXPEN Tablet to the stage DMX or ArtNet line;



11. Select the playback show number;
12. Press PLAY button from "DMXPEN Show Control" Panel on PenSuite;
13. Press STOP button to end playback;

In order to have an easy to use product, DMXPEN Tablet was designed to handle up to 12 programs controlled directly through 6 key touch panel.

PenSuite allow to control up to 1000 recording and playback sessions so we can have 12 show that can be controlled directly from the touch panel and 1000 from a remote PC. In this way we can have some show controlled form basic users and show controlled from advanced user.

Moreover PenSuite allow to design simple cue selecting the "Test DMX Out" tab; refer to the PenSuite user manual to have more information.



## WARRANTY

12 month

*(according to D.L. n.24 2 february2002, directive 1999/44/CE of European Parliament)*

## MAINTENANCE / CLEANING

No special maintenance operation are required for DMXPEN Tablet.

Anyway remember to unplug the device from the power supply during maintenance and cleaning operation.

Moreover we suggest to make a backup copy of the show file stored on the microSD card using a PC connected or other card reader device.

Use only humid cleaning cloth to clean DMXPen Tablet. Do not use cleaning solvent or washing powder.

[www.dmxpen.com](http://www.dmxpen.com)

---



Design your show, record and bring with you

---



[www.esta.org](http://www.esta.org)



[www.ArtisticLicence.com](http://www.ArtisticLicence.com)  
*Designed by and Copyright  
Artistic Licence (UK) Ltd.*