

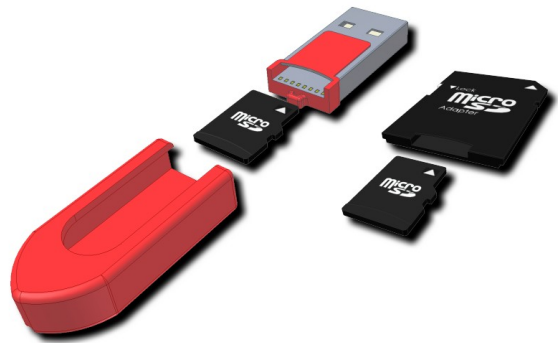
## DMXPEN Lite – File Handling

### File Handling - step 1



a. remove the MicroSd card from DMXPEN

### File Handling - step 2



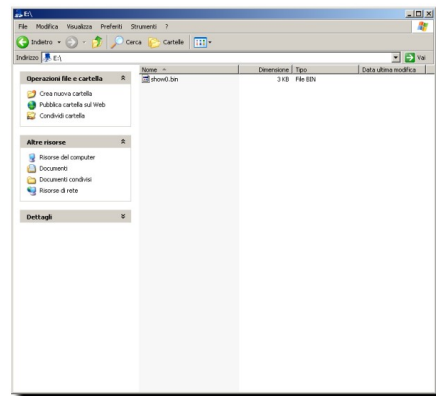
b. insert the MicroSd card on the included adapter

### File Handling - step 3



c. connect the adapter to the PC

### File Handling - step 4



d. the .BIN file can be moved from microSD card to PC or from the PC to the microSD card like a standard PC file