

DMXPen Pro – DMX Recording Quick Manual

DMX RECORDING

DMXPen Pro is able to record both DMX and ArtNet signal. Follow the next steps to learn how to perform a DMX recording session

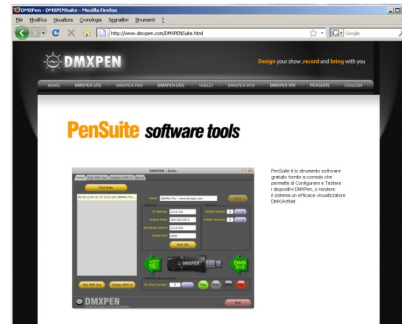


DMX Recording

DMX REC - Step 1

Use PenSuite software to select DMXPen Pro working mode and data direction. PenSuite software is provided on the on board microSD card or downloadable for free from www.dmxpen.com web site.

N.B. Remember to stop any running playback pressing the on board button before to start a recording session

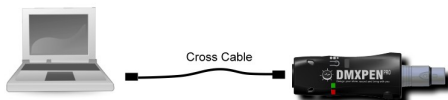


a. Install PenSuite software on your PC

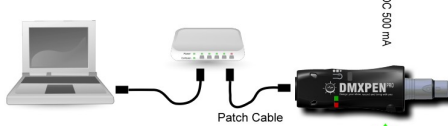
DMX REC - Step 2

The DMXPen Pro connection to PC can be established in two different way:

1. Direct connection using cross cable



2. Through HUB/Switch connection using patch cable



b. Connect DMXPen Pro to PC and power on

DMX REC - Step 3

Once installed, launch PenSuite. Remember that Firewall system can cause incorrect operation.



c. PenSuite start up

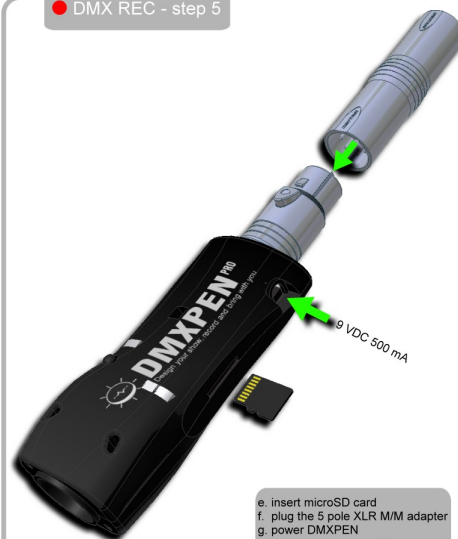
DMX REC - Step 4

1. Press "Find Node" to scan the network looking for connected devices
2. Select the desired DMXPen from the node list
3. Press on DMXPen icon to select the data direction and working mode (DMX to ArtNet in this case)



d. DMXPen network scan and mode selection

DMX REC - step 5



- e. insert microSD card
- f. plug the 5 pole XLR M/M adapter
- g. power DMXPEN
- h. be sure that the multifunction led will light steady sky blue

DMXPEN Pro – DMX Recording Quick Manual

DMX REC - step 6




i. plug DMXPEN to light desk DMX OUT output. The multifunction led will start blinking to display DMX signal reception activity

DMX REC - step 7



l. press the on board switch for at least 3sec

DMX REC - step 8



m. the multifunction led will light blinking red, to display recording session in progress
n. start show playback from light desk

DMX REC - step 9



o. press the on board switch to stop the recording session, the multifunction led will light sky blue (standby)

DMX REC - step 10



p. unplug the DMXPEN
q. unplug the XLR adapter